

→ YOUR PASSION

OUR PATHWAYS

FIND YOUR FIT AT LLOYDMINSTER
COMPREHENSIVE HIGH SCHOOL

We believe pursuit of passion
leads to learning and leading.



Introduction

At Lloydminster Comprehensive High School, we embrace the philosophy that the pursuit of one's passions ignites a transformative journey of learning and leadership. Our Passion Pathways and Diverse Course offerings are founded on the conviction that when students engage deeply with their interests, they achieve academic excellence and develop essential life skills.

The Passion Pathways allow students to delve deeper into their areas of interest and seamlessly transition from the diverse academies and programs offered across LPSD. Applications open on March 11th with limited spots available. Some fees may apply to specific pathways.

Our 'Passion Pathways' are contingent upon receiving a sufficient number of applications; this is to ensure that each pathway is vibrant, sustainable, and tailored to the genuine interests of our student body.



1 Diverse Course Offerings



2 Landbased Pathway



3 Athlete Development Pathway



4 AP Art and Design



Pick Your

PASSION

DIVERSE COURSE OFFERINGS



TRADES: AUTOMOTIVES, CONSTRUCTION, ELECTRICAL, MACHINING, DRAFTING (CAD) AND WELDING

Explore the vibrant world of practical skills and hands-on learning with our comprehensive Trades Courses. Designed to inspire and challenge students, our curriculum covers various trades. Dive into the intricacies of Automotives, where students learn to diagnose and repair with precision. Our Construction course lays a solid foundation, teaching the art and science of building from the ground up. In Electrical, students are illuminated on the complexities of wiring and circuitry, ensuring safety and innovation. The Machining course shapes meticulous craftsmen, skilled in transforming raw materials into intricate parts. Drafting (CAD) offers a digital canvas where imagination meets precision in design. Lastly, our Welding course fuses strength and artistry, teaching students to join and sculpt with metal. Each program is crafted to provide a blend of theoretical knowledge and practical experience, preparing students for a successful career in their chosen trade.



FINE AND PERFORMING ARTS: DRAMA, VIDEO PRODUCTION, PHOTOGRAPHY, ART/GRAPHIC ARTS AND MUSIC PROGRAMS

Our Fine and Performing Arts courses provide an opportunity for creativity and expression. Embrace the spotlight in Drama, where students explore the depths of character and the power of storytelling. In Video Production, young filmmakers capture and craft compelling narratives through the lens. Photography opens a window to the world, teaching the art of visual storytelling and the beauty of capturing moments. Art and Graphic Arts students paint their paths, blending traditional techniques with digital innovation to create stunning visual works. Our Music program strikes a chord with diverse options, including Band, Jazz, and Guitar, fostering a love for musical exploration and collaboration. Each course is designed to ignite passion, refine skills, and encourage artistic exploration in a supportive and inspiring environment.



ADVANCED PLACEMENT COURSES: LITERATURE AND COMPOSITION, MATH, CALCULUS

Our AP curriculum spans key disciplines, offering rigorous courses in Literature and Composition, where students delve into complex texts and hone their analytical writing skills. In Math and Calculus, learners tackle challenging concepts and problem-solving techniques, preparing for advanced mathematical studies. These courses are not just about academic growth; they're a gateway to earning post-secondary credits upon successful completion. Each AP class is taught by dedicated educators specializing in their fields, providing an immersive, college-level learning experience fostering critical thinking, discipline, and intellectual curiosity. By participating in our AP program, students not only gain a competitive edge for college applications but also the opportunity to earn credits that may count towards their future college degree.

Lloydminster Comprehensive High School

MORE - DIVERSE COURSE OFFERINGS



At LCHS, we incorporate Science, Technology, Engineering, and Math concepts into our core Science 10, Environmental Science, and Earth Science courses. Students have opportunities to engage and interact with cutting-edge technology to better understand the world around them by solving problems, conducting research, and creating innovative solutions. Students engaged in these courses can find themselves taking their learning outside of the walls of LCHS as they learn about curricular topics. We look forward to expanding STEM opportunities at LCHS in the future as we move into our newly constructed STEM lab which allows us direct access to our outdoor courtyard space and an array of new technologies!



Our Hairstyling and Esthetics program is designed for students with a passion for beauty, style, and personal care. Our curriculum covers a wide range of skills, from cutting-edge hairstyling techniques and hair care to comprehensive esthetic services. What sets our program apart is the unique dual credit option, established in partnership with Lakeland College. This collaboration offers students the extraordinary opportunity to earn both high school and college credits simultaneously. This program is not just about learning the techniques; it's about embracing creativity, enhancing personal skills, and building confidence.

PASSION PATHWAYS AT LCHS



Grade 9

LANDBASED PATHWAY



The grade 9 land-based learning pathway at LCHS is perfect for those who prefer to learn through hands-on and experiential teaching methods.

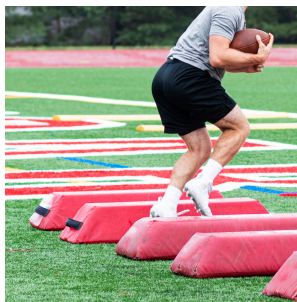
For one semester, those students enrolled in the pathway will work alongside their teacher as they venture into the community and nearby wilderness to learn grade 9 curricular outcomes. Through the program, students will work towards the completion of their English, Phys.Ed, Health, Outdoor Ed, Social Studies, Science, and Cree classes. Courses offered in the Land-based experience may be subject to change.

Students in the land-based learning pathway can look forward to outdoor experiences such as hiking, bike riding, snowshoeing, canoeing, fire-making, building shelters, fishing, studying plants, and learning about indigenous ways of knowing and doing. Although a different structure, students will continue to have land-based learning opportunities in grades 10-12.

- ✓ **PROMOTE STUDENT WELLNESS**
- ✓ **BE ACTIVE LEARNERS WHO DEMONSTRATE GROWTH AND UNDERSTANDING THROUGH EXPERIENTIAL AND PROJECT-BASED LEARNING**
- ✓ **FOCUS ON OUR RELATIONSHIPS WITH EACH OTHER, THE LAND, AND OUR COMMUNITY**
- ✓ **BRIDGE WESTERN SCIENCE AND INDIGENOUS KNOWLEDGE**
- ✓ **BUILD A SENSE OF IDENTITY AND INTERDEPENDENCE IN STUDENTS**

What is the

ATHLETE DEVELOPMENT PATHWAY



PASSION PATHWAYS AT LCHS

The athlete development pathway at LCHS provides student-athletes with advanced technical, theoretical, and experiential opportunities to grow as an athlete and individuals. The athlete development pathway aims to develop and support single and multisport athletes to achieve their athletic goals while striving for academic excellence in an integrated high school setting.

Students will be exposed to multisport programming to assist in developing well-rounded athletes, while also being able to personalize and tailor their training program to excel in the sports they are passionate about. Students in this pathway will have credit and experiential opportunities tied to sport that are not available to the general student population. Students can engage in 'immersion' activities not offered in our community through field trips to larger centers.

This pathway recognizes that every student-athlete is unique, with individual strengths, areas for growth, and aspirations. Our qualified instructors will guide students to tailor their training programs to meet each athlete's specific needs, focusing on physical fitness, skill development, and mental resilience. Through personalized coaching, we aim to instill a sense of self-discipline,,

perseverance, and goal-setting that extends beyond the realm of sports. At intervals throughout the year, students will be given choice to pursue additional instruction and repetitions in their passion areas from qualified coaches and guest instructors.

Students who are interested in applying to this program are NOT required to be elite athletes in a sport, however, they should be coachable, motivated, and open-minded as they aspire towards athletic excellence. Entry into the pathway will be application based, not all applicants may be accepted, pending interest in the program. The Athlete Development Pathway at LCHS has a fee of \$550. This fee will contribute towards transportation costs (local and out of town), facility rentals, clothing (t-shirt, shorts, hoodie), coach and guest speaker fees, program supplies, and supplementary activities.

SNAP SHOT

What your year could look like? - Example Timetable

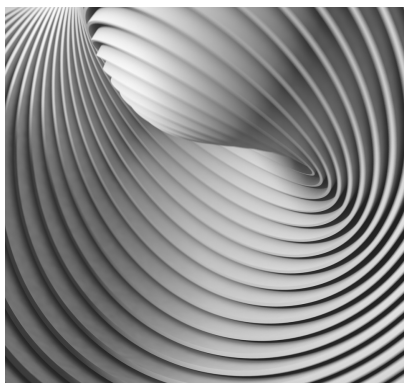
THIS INNOVATIVE ATHLETE-FOCUSED PROGRAMMING DELIVERS CORE CURRICULUM WITH SPORT-INFUSED ELECTIVES.

GRADE 10	
ELA 10	Finacial Lit 10
Personal Fitness 20 Wellness 10	
Sports Nutrition (Foods 10) or Active Living 20	Elective
1st Math	2nd Math
Science 10	Social Studies 10

GRADE 11	
SCI 20	SS 20
PE 20 High performance Training and Sport Psychology 20	
Active Living and Fitness Leader 20	*ELA
1st Math	2nd Math
Elective	Elective

*Grade 11 program may allow students the opportunity to take ELA 20 delivered through the lens of sport.





AP ART AND DESIGN PATHWAY

The AP art and design pathway will allow students to extend their passions exhibited within and beyond the LPSD art academy. Starting in grade 9, students can take an Advanced Art 9 class in preparation for the Pre-AP Art 10 class that students may enrol in as they progress to grade 10. The Pre-AP Art 10 course will cover regular Art 10 curricular outcomes and extend students' knowledge, experiences, and proficiencies in preparation for the AP Art and Design 30 course. Through this course, students will build a portfolio that will be submitted to the College AP board. Students may earn a college art credit by successfully completing this course.

PASSION PATHWAYS AT LCHS

High School Advanced Placement

ART AND DESIGN



SNAP SHOT

What your year could look like? - Example Timetable

THIS CREATIVE PASSION PATHWAY IS ONLY AVAILABLE FOR GRADE 10 STUDENTS—A PROGRESSIONAL VIEW OF HOW THE PATHWAY WOULD CONTINUE TO GRADUATION.

GRADE 10	
ELA 10	Financial Lit 10
Math 10	Well 10
Science 10	Social Studies 10
Elective	Elective
Art 10 PreAP	Graphic Arts 20

GRADE 11	
SCI 20	SS 20
ELA 20	Math 20
Elective	Elective
Elective	Elective
Art 20 PreAP	Graphic Arts

GRADE 12	
ELA 30	Science 30
Social Studies 30	Math 30
Elective	Elective
Elective	Elective
AP Art and Design 30	AP Art and Design 30



Lloydminster Comprehensive High School

PASSION PATHWAYS

Contact the School for further information.
Visit lchs.lpsd.ca for a full description of course offerings and to register.

5615 - 42 STREET
LLOYDMINSTER, AB
T9V 0A2
780-875-5513