

LCHS Essential Academic Apps

2017-2018

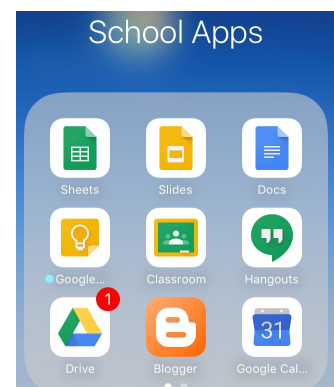
Here is the list of free Android/iOS apps for a better high school experience.

Working on a Mobile Device

1. Go to the App Store (iOS) or Chrome Store (Android) and download the Google Suite of Apps listed below.
2. Sign in to each app using your school Google account (firstname.lastname@lpsd.ca)

Google Drive	File and folder storage
Gmail	School email account
Google Docs	Word processing program
Google Slides	Slide presentation program
Google Sheets	Spreadsheet program - graphs, charts, stats, lists. Works with text and formulas
Google Classroom	Communication tool used by teachers to distribute and collect class material. (Once you sign up you will have a 'Classroom' folder in your Google Drive - do not delete the folder as this contains all the files for your classes.)
Chrome Browser	If you use this browser then your bookmarks and browsing history will always be accessible.

**Note: If leaving LCHS for graduation or other reasons, you should migrate your student material to a personal gmail account as your account will be disabled after you leave. Please use [Google Takeout](#) for this transfer process.*



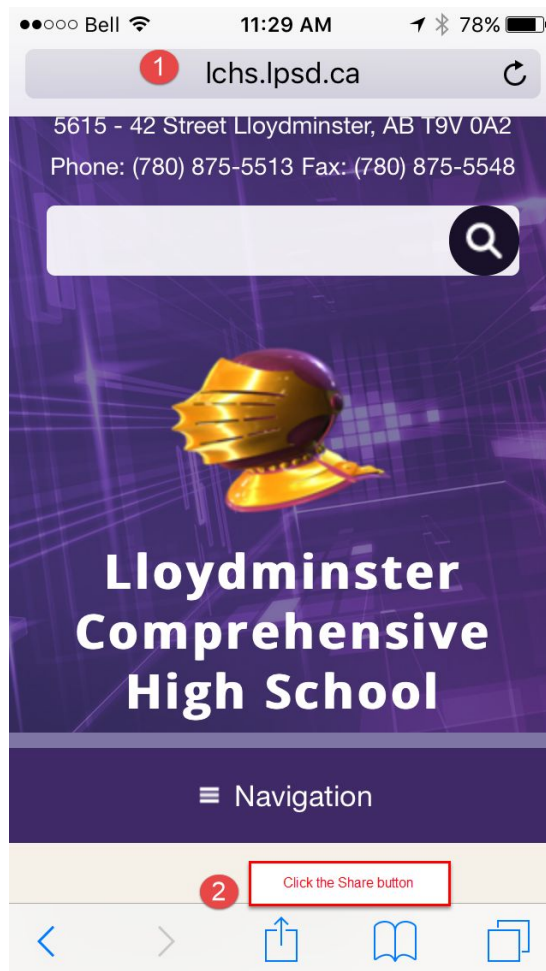
T_Ime Information and Sign up

LCHS T_Ime

Suggestion: On a mobile device, make a bookmark for the LCHS homepage to have easier access to your weekly sign up information.

iOS/iPhone: Go to the LCHS website and 'Add to Home Page' (Safari browser) or set a bookmark (Chrome browser).

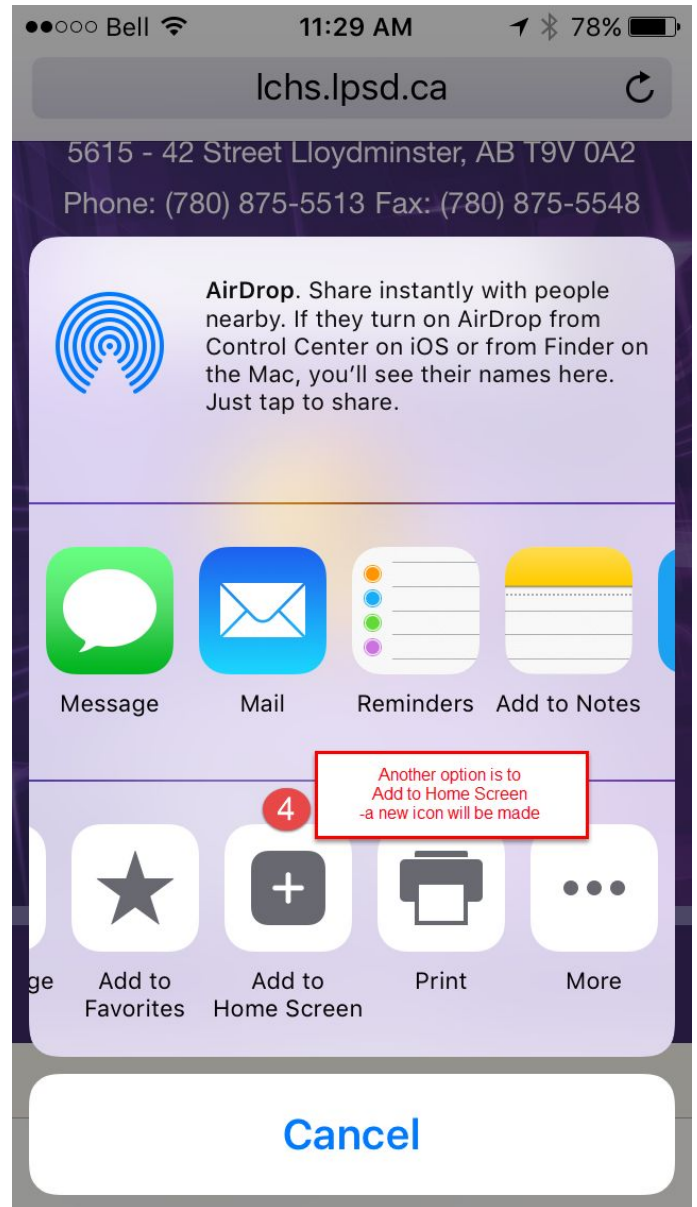
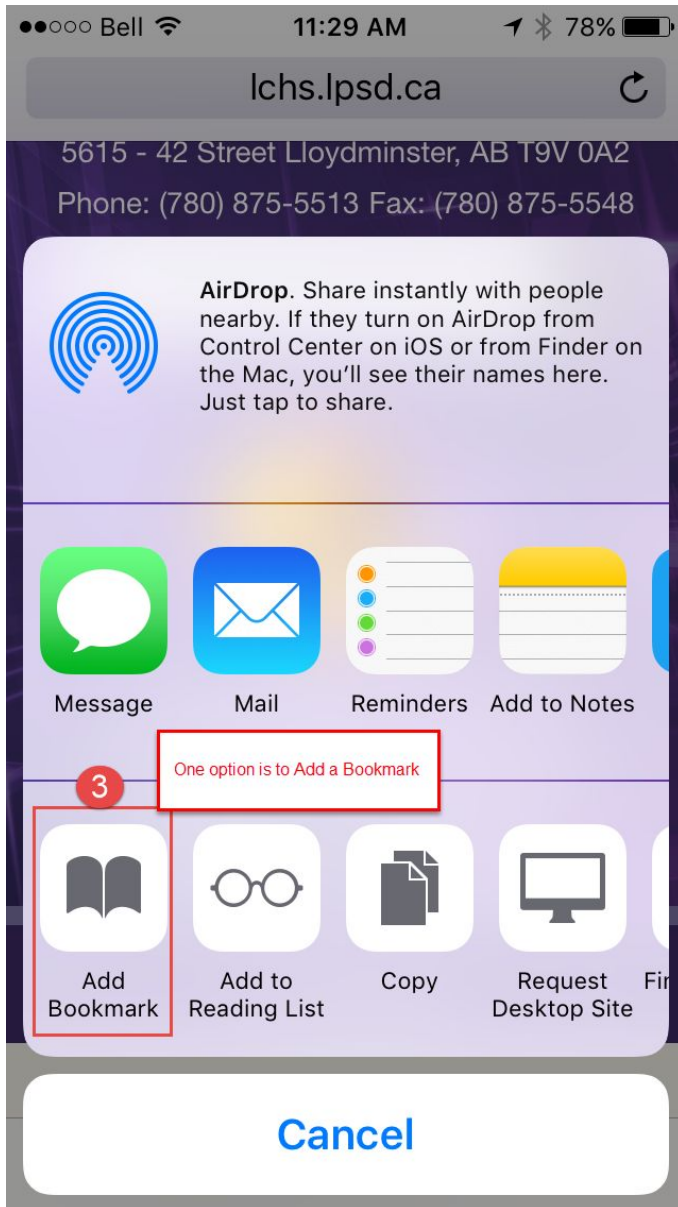
1. Search for LCHS (Safari)
2. Go to the LCHS Home Page and then press the Share button at the bottom of the screen.



3. Add a Bookmark

OR

4. Add to Home Screen



5. Rename the Icon

5

Rename it something short



LCHS

<http://lchs.lpsd.ca/>

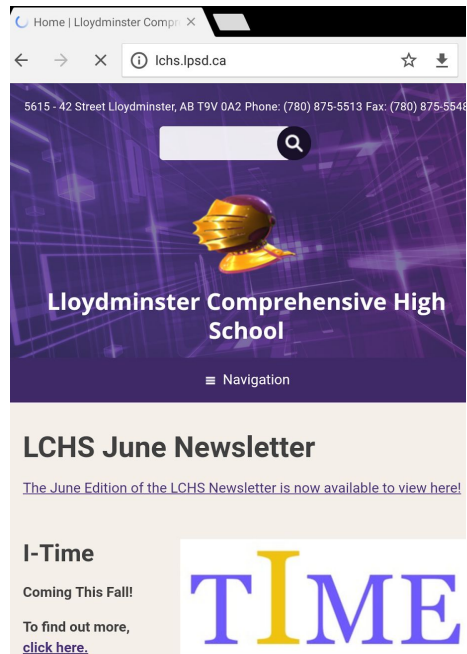
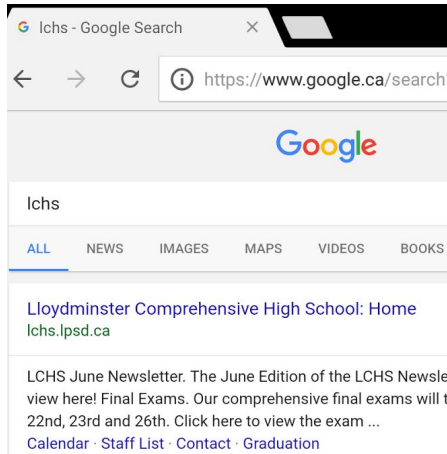
An icon will be added to your home screen so you can quickly access this website.

6. Add the Icon for MyBlueprint (online Education Planner) in the same manner.

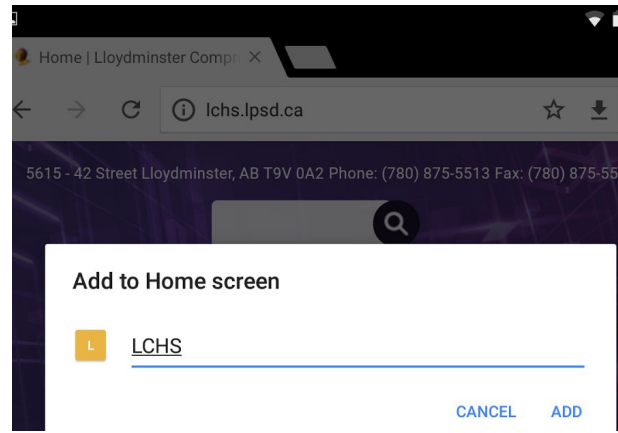
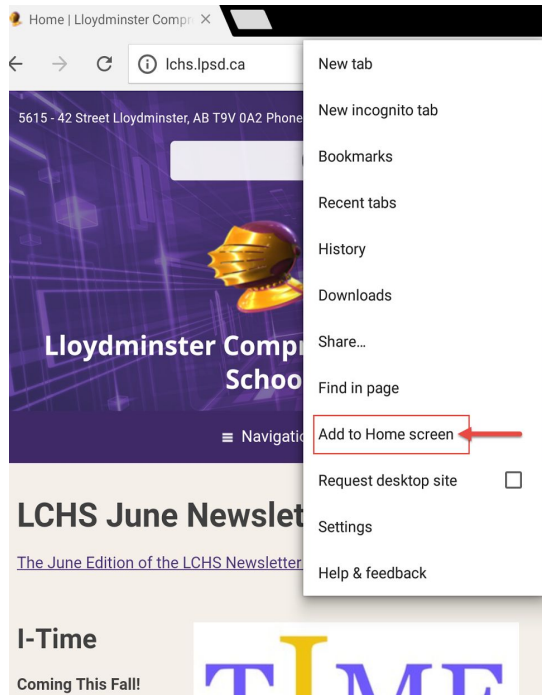


Android: Go to the LCHS website and set a bookmark in Chrome. Here are some [visual instructions](#) to help you with this process.

1. Search for LCHS. You will find your i-Time information on the Home page.



2. Click the **3 little dots** on the top right of your screen to show the menu below and then **Add to Home Screen**. Change the name to **LCHS** or something similar and you are done!



Working on a Home Computer

To access all your school Google Drive files and apps, please download the Chrome Browser on your home computer. If signed in to your Google account, all your school material will be with you no matter where you are! Sign in using firstname.lastname@lpsd.ca.

If sharing a computer at home, ensure you are safely signed in to your own personal school account and not that of your siblings or parents. Likewise, they should not be in your account, according to the Acceptable Use Policy.

Note: Refer to the **Using Chrome at Home** sheet found on the [LCHS iTime](#) section.